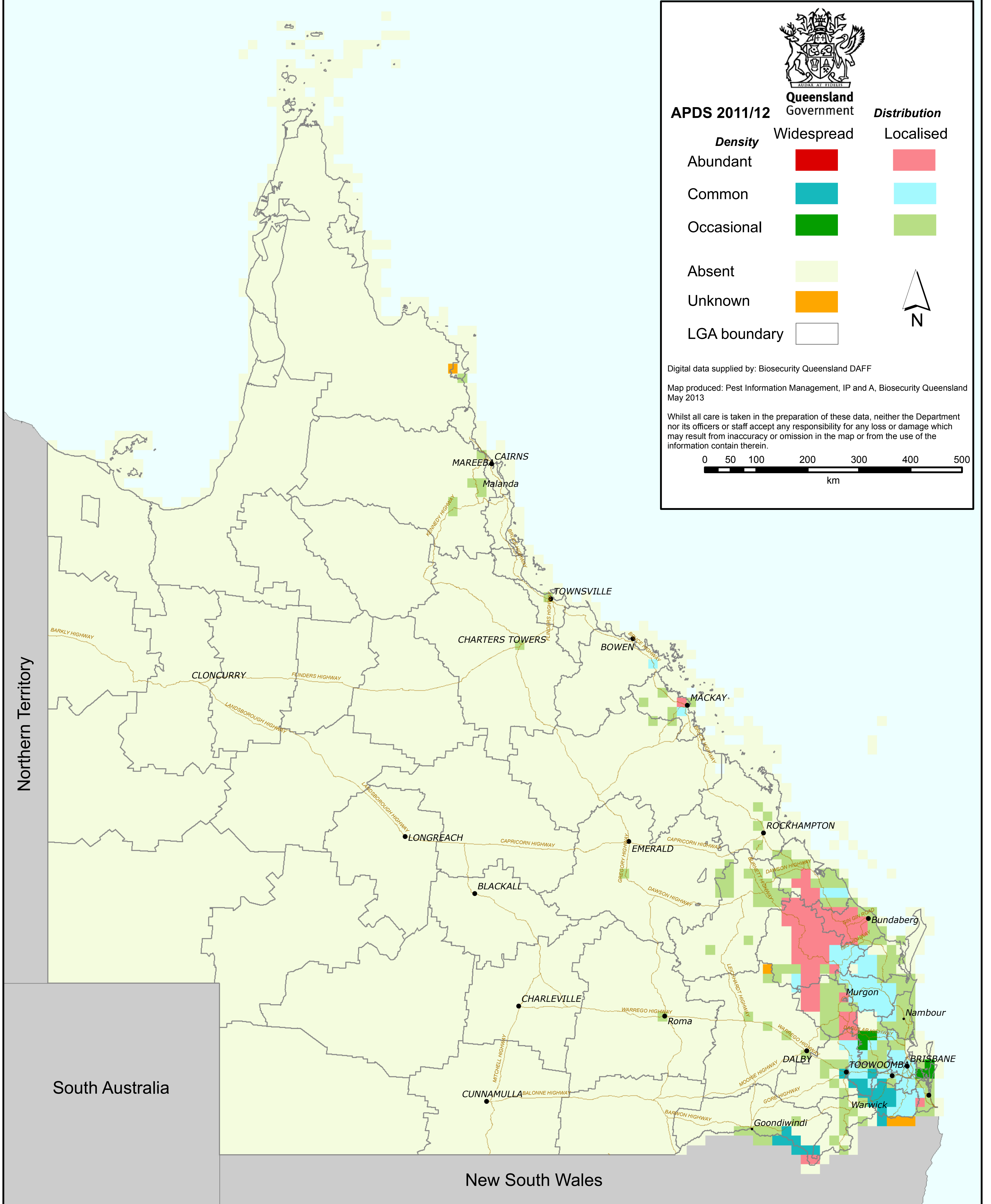


# CATS CLAW CREEPER

*(Macfadyena unguis-cati)*

## QUEENSLAND DISTRIBUTION 2011/2012



Queensland Government

APDS 2011/12

Distribution

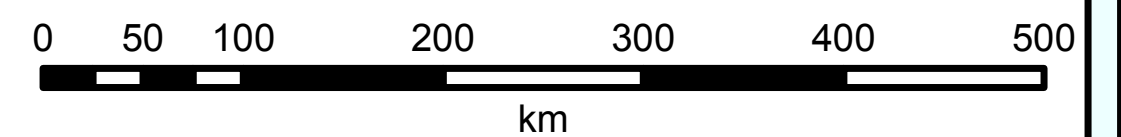
Density	Widespread	Localised
Abundant	<span style="display:inline-block; width:15px; height:15px; background-color:red;"></span>	<span style="display:inline-block; width:15px; height:15px; background-color:lightcoral;"></span>
Common	<span style="display:inline-block; width:15px; height:15px; background-color:teal;"></span>	<span style="display:inline-block; width:15px; height:15px; background-color:lightcyan;"></span>
Occasional	<span style="display:inline-block; width:15px; height:15px; background-color:green;"></span>	<span style="display:inline-block; width:15px; height:15px; background-color:lightgreen;"></span>
Absent	<span style="display:inline-block; width:15px; height:15px; background-color:yellow;"></span>	
Unknown	<span style="display:inline-block; width:15px; height:15px; background-color:orange;"></span>	
LGA boundary	<span style="display:inline-block; width:15px; height:15px; border:1px solid black;"></span>	



Digital data supplied by: Biosecurity Queensland DAFF

Map produced: Pest Information Management, IP and A, Biosecurity Queensland May 2013

Whilst all care is taken in the preparation of these data, neither the Department nor its officers or staff accept any responsibility for any loss or damage which may result from inaccuracy or omission in the map or from the use of the information contain therein.



Northern Territory

South Australia

New South Wales