

MINING LEASE
ABANDONMENT
APPLICATION – ML 70486
"SPRINGSURE CREEK"
METES & BOUNDS
DESCRIPTION

ML 70486 SPRINGSURE CREEK



RTI DL RELEASE - DNRM

Prepared by
Cottrell Cameron & Steen Surveys Pty Ltd
26/6/2013



COTTRELL CAMERON & STEEN

ML70486 "SPRINGSURE CREEK" ABANDONMENT

APPLICATION DESCRIPTION

COMMENCEMENT POINT FOR AREA TO BE ABANDONED

The commencement point for the area to be abandoned is located at the intersection of part of the eastern boundary of EPC 891, being longitude 148°23'03.9479" with the common boundary between Lot 2 on SP141314 and Lot 2 on DSN856 in the Parish of Cowley, County of Denison, Locality of Arcturus, at approximate MGA coordinates of East 640919.728, North 7355132.594

DESCRIPTION OF AREA TO BE ABANDONED

Commencing at the commencement point
thence heading in an north westerly direction at a bearing of 313°27'46" for a distance of 1474.293 metres more or less along and coincident with part of the common boundary between Lot 2 on SP141314 and Lot 2 on DSN 856, to a point on that boundary 200m south east of Kilmore Access Road
thence heading in an north easterly direction at a bearing of 43°32'36" for a distance of 1157.592 metres, parallel with the southern boundary of Kilmore Access Road (also part of the northern boundary of Lot 2 on SP141314) to the intersection of that boundary with part of the eastern boundary of EPC 891, being longitude 148°23'03.9479", which is also a corner of ML 70502
thence heading in a southerly direction at a bearing of 171°37'59" for a distance of 1873.129 metres more or less along and coincident with part of the eastern boundary of EPC 891, being longitude 148°23'03.9479", back to the point of commencement

Area to be Abandoned **85 ha**

RTI DL RELEASED UNDER

AREA TO BE RETAINED AS ML70486

"SPRINGSURE CREEK"

DATUM POST

The Datum Post, branded SCC P/L 16/10/2012 is located at the north western most corner of Lot 2 on DSN856 in the Parish of Cowley, County of Denison, Locality of Arcturus, which is also at the intersection of Wyntoon Road and Kilmore Access Road, at approximate MGA coordinates of East 636308.023 , North 7353746.377

DESCRIPTION

Commencing at the datum post
thence heading in an north easterly direction at a bearing of 44°01'36" for a distance of 4230.563 metres more or less along and coincident with part the southern boundary of Kilmore Access Road (also the northern boundary of Lot 2 on DSN856) to a bend in that boundary
thence heading in an north easterly direction at a bearing of 43°32'36" for a distance of 1583.596 metres more or less along and coincident with part of the southern boundary of Kilmore Access Road (also part of the northern boundary of Lot 2 on DSN856 and Lot 2 on SP141314) to the intersection of that boundary with part of the eastern boundary of EPC 891, being longitude 148°23'03.9479"
thence heading in a southerly direction at a bearing of 171°37'59" for a distance of 254.177 metres more or less along and coincident with part of the eastern boundary of EPC 891, being longitude 148°23'03.9479", to a corner of ML70502
thence heading in a south westerly direction at a bearing of 223°32'36" for a distance of 1157.592 metres, parallel with the southern boundary of Kilmore Access Road (also part of the northern boundary of Lot 2 on SP141314), to the intersection of that line with part of the common boundary between Lot 2 on SP141314 and Lot 2 on DSN 856
thence heading in a south easterly direction at a bearing of 133°27'46" for a distance of 2384.529 metres more or less along and coincident with part of the eastern boundary of Lot 2 on DSN 856 to a corner of Lot 2 on DSN 856
thence heading in a south westerly direction at a bearing of 217°28'16" for a distance of 1017.713 metres more or less along and coincident with part of the boundary of Lot 2 on DSN 856 to a point on that boundary at approximate MGA coordinates of East 640738.265, North 7353709.627
thence heading in a south easterly direction at a bearing of 127°41'31" for a distance of 12656.014 metres more or less, across Lot 5 on DSN 856, and to remain clear of the corner of Lot 4 on DSN 709, across Springton Road and across Lot 5 on DSN 856, and Lot 7 on RP 620355, Parish of Arcturus, County of Denison, to the intersection of that line with part of the southern boundary of Lot 7 on RP 620355 (also the northern boundary of Comet Downs Road)
thence heading in a general south westerly direction for the following lines, along and coincident with part of the northern boundary of Comet Downs Road
198°42'36" for a distance of 1344.365 metres more or less
187°39'36" for a distance of 921.250 metres more or less
248°25'16" for a distance of 2254.230 metres more or less

248°05'36" for a distance of 1553.540 metres more or less
247°18'36" for a distance of 416.060 metres more or less to a bend in that boundary
thence heading in a westerly direction at a bearing of 270°55'41" for a distance of 3974.590 metres
more or less, across Lot 8 on RP 620355 and Lot 11 on RP 619636 in the Parish of Arcturus, County of
Denison, to a bend in the northern boundary of Arcturus Road at approximate MGA coordinates East
640510.838, North 7342175.943
thence heading in a generally westerly direction at a bearing of 281°05'36" for a distance of 260.895
metres more or less, along and coincident with part of the northern boundary of Arcturus Road, to a
bend in that boundary
thence heading in a north westerly direction at a bearing of 309°54'21" for a distance of 6033.305
metres more or less, across Lot 11 on RP 619636 in the Parish of Arcturus, County of Denison, Lot 6 on
DSN 708 Parish of Cowley, County of Denison to the intersection of that line with part of the southern
boundary of Springton Road at approximate MGA coordinates of East 636294.293, North
7346807.138
thence heading in a north easterly direction at a bearing of 43°27'36" for a distance of 1531.355
metres more or less, along and coincident with part of the southern boundary of Springton Road (also
the northern boundary of Lot 6 on DSN 708 in the Parish of Cowley, County of Denison), to the
intersection of that line with the eastern boundary of Wyntoon Road (also the western boundary of Lot
2 on DSN856)
thence heading in a generally northerly direction at a bearing of 339°46'36" for a distance of 6123.239
metres more or less along and coincident with part of the eastern boundary of Wyntoon Road (western
boundary of Lot 2 on DSN 856) back to the point of commencement and containing an area of
approximately 10651 hectares.

Name of Lease: "Springsure Creek"

Area of Lease : 10651 Hectares

Surface Area : Whole

BEARINGS ARE MAGNETIC (ADD 8° 55'40" TO CONVERT TO MGA ZONE 55 GRID BEARINGS).

DISTANCES ARE GRID DISTANCES. TO CONVERT TO TERRAIN DISTANCES A SCALE FACTOR MUST BE APPLIED

LATITUDE AND LONGITUDE ARE SHOWN IN GDA94 DATUM.

ACCESS

Access to the mining lease is by Kilmore Access Road, Wyntoon Road and Springton Road

METES DESCRIPTION – MAGNETIC BEARINGS		METES DESCRIPTION – MGA GRID BEARINGS	
Starting at the Commencement Point		Starting at the Commencement Point	
44°01'36"	4230.563	52°57'16"	4230.563
43°32'36"	1583.596	52°28'16"	1583.596
171°37'59"	254.177	180°33'39"	254.177
223°32'36"	1157.592	232°28'16"	1157.592
133°27'46"	2384.529	142°23'26"	2384.529
217°28'16"	1017.713	226°23'56"	1017.713
127°41'31"	12656.014	136°37'11"	12656.014
198°42'36"	1344.365	207°38'16"	1344.365
187°39'36"	921.250	196°35'16"	921.250
248°25'16"	2254.230	257°20'56"	2254.230
248°05'36"	1553.540	257°01'16"	1553.540
247°18'36"	416.060	256°14'16"	416.060
270°55'41"	3974.590	279°51'21"	3974.590
281°05'36"	260.895	290°01'16"	260.895
309°54'21"	6033.305	318°50'01"	6033.305
43°27'36"	1531.355	52°23'16"	1531.355
339°46'36"	6123.239	348°42'16"	6123.239
Back to the point of commencement		Back to the point of commencement	

CORNER	MLA CORNER COORDINATES - MGA		MLA CORNER COORDINATES LAT/LONG	
	EASTING	NORTHING	LATITUDE (South)	LONGITUDE (East)
01	636308.023	7353746.377	23° 55'19.7419"	148° 20'21.3446"
02	639684.680	7356295.073	23° 53'55.8373"	148° 22'19.8788"
03	640940.547	7357259.736	23° 53'24.0809"	148° 23'03.9479"
03a	640938.061	7357005.634	23° 53'32.3419"	148° 23'03.9479"
04	640020.035	7356300.476	23° 53'55.5558"	148° 23'31.7339"
05	641475.252	7354411.475	23° 54'56.4990"	148° 23'23.8419"
06	640738.265	7353709.627	23° 55'19.5491"	148° 22'58.0242"
07	649430.869	7344511.078	24° 00'15.7028"	148° 28'08.8002"
08	648807.243	7343320.109	24° 00'54.6270"	148° 27'47.1718"
09	648544.239	7342437.198	24° 01'23.4152"	148° 27'38.1892"
10	646344.737	7341943.495	24° 01'40.2001"	148° 26'20.5289"
11	644830.885	7341594.585	24° 01'52.0426"	148° 25'27.0773"
12	644426.769	7341495.608	24° 01'55.3927"	148° 25'12.8103"
13	640510.838	7342175.943	24° 01'34.5452"	148° 22'53.9789"
14	640265.710	7342265.265	24° 01'31.7198"	148° 22'45.2726"
15	636294.293	7346807.138	23° 59'05.3235"	148° 20'23.1892"
16	637507.372	7347741.743	23° 58'34.5655"	148° 21'05.7913"
	Coordinates are MGA Zone 55		Latitudes and Longitudes are GDA94	

AFFECTED LAND OWNERS SCHEDULE (Q6.1 – Q6.6 of ML Application Form)			
Description of Land		Owners Name and Address	Surface Area Required
Lot Number Plan Number Tenure Parish County Title Reference Current Use	11 RP619636 Freehold Arcturus Denison 30583208 Grains	Janet Louise Sullivan CEDAR PARK 3035 Arcturus Rd Springsure, QLD 4722	Part Approx 1230 ha
Lot Number Plan Number Tenure Parish County Title Reference Current Use	6 DSN708 Freehold Cowley Denison 50670335 Cattle Breeding	John Anthony Sullivan 666 Springton Road, Springsure, QLD 4722	Part Approx 1400 ha
Lot Number Plan Number Tenure Parish County Title Reference Current Use	8 RP620355 Freehold Cowley Denison 30592205 Grains	Arcturus Downs Limited PO Box 42 Springsure, QLD 4722	Part Approx 1950 ha
Lot Number Plan Number Tenure Parish County Title Reference Current Use	7 RP620355 Freehold Cowley Denison 30592204 Grains	Arcturus Downs Limited PO Box 42 Springsure, QLD 4722	Part Approx 1125 ha
Lot Number Plan Number Tenure Parish County Title Reference Current Use	2 DSN856 Freehold Cowley Denison 50221487 Grains	Springsure Agricultural Holdings Pty Ltd GPO Box 5227 Brisbane, QLD 4001	Whole Approx 2243 ha

AFFECTED LAND OWNERS SCHEDULE

(Q6.1 – Q6.6 of ML Application Form)

Description of Land		Owners Name and Address	Surface Area Required
Lot Number	5	Kenneth Kevin Sullivan & Sylvia Margaret Sullivan 'Springton Road' Springsure, QLD 4722	Part Approx 2630 ha
Plan Number	DSN 856		
Tenure	Freehold		
Parish	Cowley		
County	Denison		
Title Reference	50323263		
Current Use	Grains		
Lot Number	2	Springton Pty Ltd(TTE) 'Springton' 204 Oasis Access Rd Springsure, QLD 4722	Part Approx 24.7 ha
Plan Number	SP141314		
Tenure	Freehold		
Parish	Cowley		
County	Denison		
Title Reference	50386085		
Current Use	Grains		
Lot Number	Roads	Central Highland Regional Council PO Box 21, EMERALD QLD 4720	Part Approx 48 ha
Plan Number			
Tenure	State Land		
Parish	Various		
County	Denison		
Title Reference			
Current Use	Road		

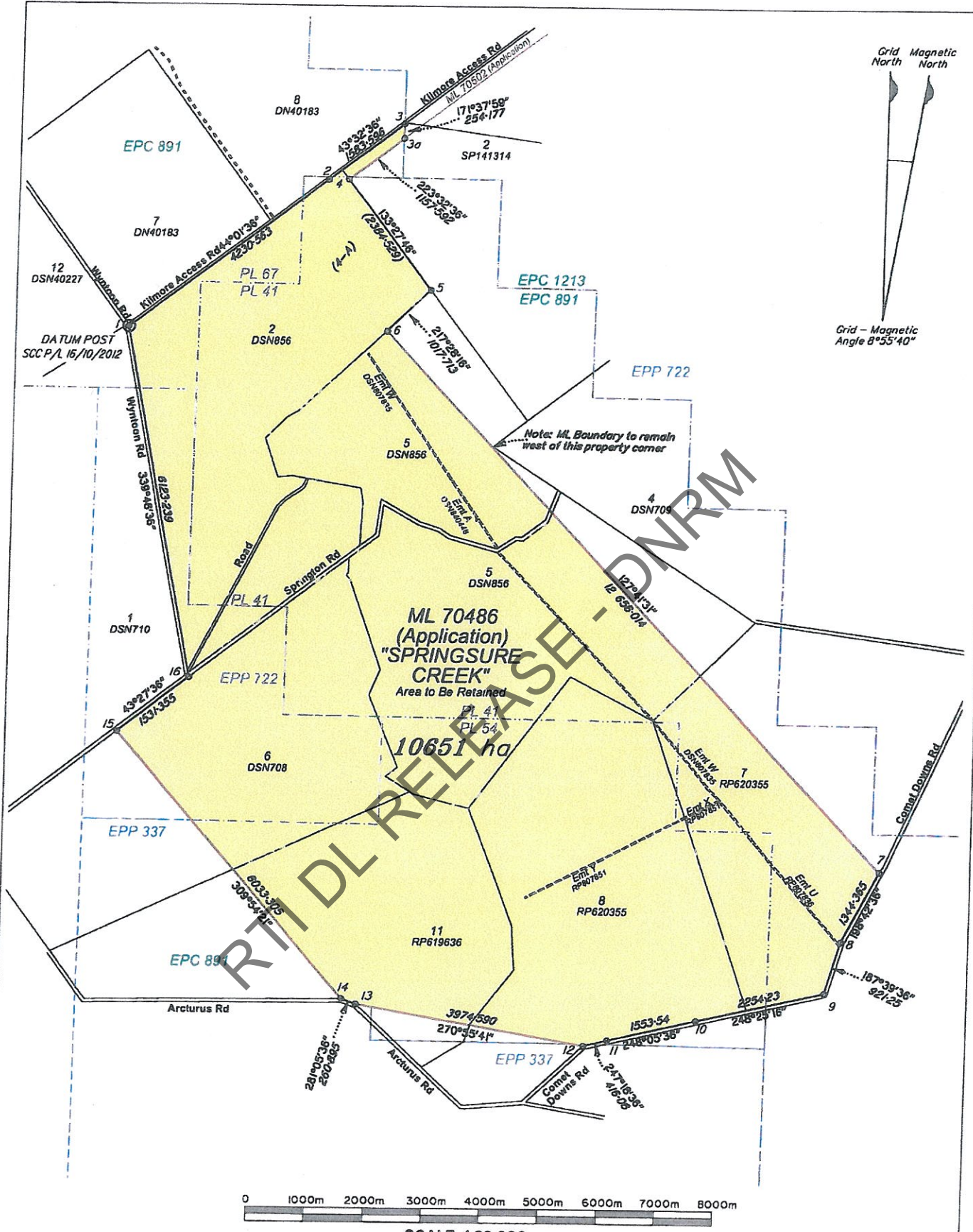
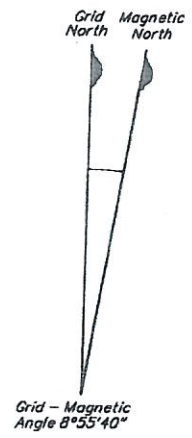
RTI DL RELEASE - DNRM

SECONDARY INTERESTS SCHEDULE (Q6.1 – Q6.6 of ML Application Form)			
Description of Secondary Interest		Beneficiary Name and Address	Surface Area Required
Lot Burdened Lot 7 on RP620355	Easement U on DSN807836 Parish of Cowley County Of Denison	Santos QNT Pty Ltd Level 22 Santos Place 32 Turbot Street Brisbane Queensland 4000 Oil Company of Australia NL c\ - Origin Energy Coronation Drive Business Park 135 Coronation Drive Milton Qld 4064	Whole 9.841 Ha
Lot Burdened Lot 5 on DSN856	Easement V on DSN807835 Parish of Cowley County of Denison	Santos QNT Pty Ltd Level 22 Santos Place 32 Turbot Street Brisbane Queensland 4000 Oil Company of Australia NL c\ - Origin Energy Coronation Drive Business Park 135 Coronation Drive Milton Qld 4064	Whole 9.841 Ha
Lot Burdened Lot 5 on DSN856	Easement W on DSN807835 Parish of Cowley County of Denison	Santos QNT Pty Ltd Level 22 Santos Place 32 Turbot Street Brisbane Queensland 4000 Oil Company of Australia NL c\ - Origin Energy Coronation Drive Business Park 135 Coronation Drive Milton Qld 4064	Whole 10.23 Ha
Lot Burdened Lot 5 on DSN856	Easement A on DSN840448 Easement Cowley Denison	AGL Petroleum Operations Pty Ltd Oil Company of Australia NL c\ - Origin Energy Coronation Drive Business Park 135 Coronation Drive Milton Qld 4064	Whole 0.09 Ha

SECONDARY INTERESTS SCHEDULE

(Q6.1 – Q6.6 of ML Application Form)

Description of Secondary Interest		Beneficiary Name and Address	Surface Area Required
Lot Burdened Lot 8 on RP620355	Easement Y on RP807851 Parish of Cowley County of Denison	Santos QNT Pty Ltd Level 22 Santos Place 32 Turbot Street Brisbane Queensland 4000 Oil Company of Australia NL c/- Origin Energy Coronation Drive Business Park 135 Coronation Drive Milton Qld 4064	Whole 7.555 Ha
Lot Burdened Lot 7 on RP620355	Easement X on RP807851 Parish of Cowley County of Denison	Santos QNT Pty Ltd Level 22 Santos Place 32 Turbot Street Brisbane Queensland 4000 Oil Company of Australia NL c/- Origin Energy Coronation Drive Business Park 135 Coronation Drive Milton Qld 4064	Whole 1.643 Ha
Lot Burdened Lot 2 on DSN856	Lease of Whole of Lot 2 on DSN 856 Instrument No 714124374	Milroy Farming Company Pty Ltd	Whole 2243 Ha



COTRELL CAMERON & STEEN
SURVEYS PTY LTD
 Building 10, Suite B
 Technology Office Park

SPRINGSURE CREEK COAL
PLAN SHOWING AREA TO BE RETAINED AS
ML 70486 "SPRINGSURE CREEK"

NOTES
 1 Bearings shown on this plan are Magnetic. To convert to Grid (MGA Z55) add 8° 55' 40"
 2 Distances shown are grid distances. To convert to terrain or ground distance - a scale factor must be applied
 3 Property boundaries have been compiled where possible from registered survey plans. Road names from DCCB
 4 Dimensions and areas subject to confirmation by survey

107 Miles Platting Road, Eight Mile Plains,
 P.O. Box 4114, Eight Mile Plains, Qld 4113
 PH: 1071 3340 9700 FAX: 1071 3841 8077

© COPYRIGHT 2007 COTRELL CAMERON & STEEN SURVEYS
 This drawing must not be used, copied or reproduced in whole or part for any purpose, other than which it was supplied without the prior consent of Cottrill Cameron & Steen Surveys Pty Ltd.

Cad File: 10003-5-SK3.dwg	Scale: 1:60,000 (A3)	Drawing No.
Drawn: TCP Date: 7/6/2013	Datum: MGA Z55	10003-5-SK4
Chkd: TCP Date: 7/6/2013	Issued: 7/06/2013	Sheet 1 of 1

A Issued for Lodgement 7/6/13